

DATASHEET

AQUAmodem™ Op2

Subsea optical modem



KEY FEATURES

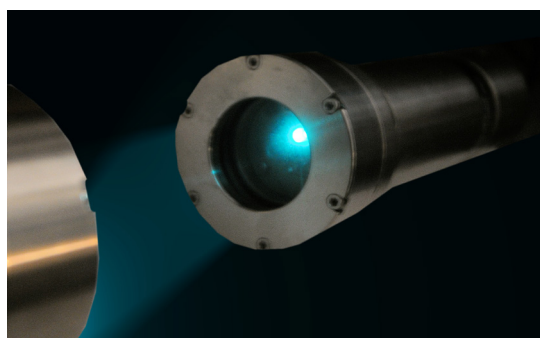
- Short range interrogation, commanding and data download from subsea instruments
- Compatible with instruments with RS232 serial interfaces
- Depth rated to 3500 m
- New higher speed data transfer
- Suitable for work class ROVs
- Compatible with the new HYDROlog 3000 range, including HYDROlog 3000PT, PPT and PgT.

APPLICATIONS

- Hydrotest monitoring
- Real time data view
- Instrument status checks
- Subsea data download
- Redeploying instruments subsea

MODEM PACKAGES

- Complete modem set - including modem pair, subsea battery pack, and ROV, surface & subsea cable sets
- ROV side modem set - including ROV and test cables
- Subsea modem set - including subsea cable set and battery



Technical specification

| | | |
|----------------------|----------------------------------|--|
| Environmental | Operating Depth | 3500 m |
| | Temperature | Operating: -5°C to 40°C Storage: -40°C to 65°C |
| Telemetry | Light band | Cyan visible light |
| | Operating Range | Typically 1 m depending on environment |
| | Transmission type | Digitally coded telemetry with error detection |
| | Typical Maximum Data Throughput* | 10.2 kBytes/s |
| | Addressing | Up to 3 unique addresses, plus a universal / broadcast address |
| Mechanical | Dimensions | 285 mm long by 72 mm max diameter; main housing diameter 60 mm |
| | Weight | 4 kg in air, 3 kg in water |
| | Material | Stainless Steel 316 with Perspex window |
| Power | External Power | ROV unit 9 – 36 Vdc Subsea unit 6.5 - 32 Vdc |
| Wake up | Serial Wake Up | Optional on receipt of RS232 serial data for subsea unit On receipt of RS232 serial data for ROV unit |
| | Optical Wake Up | On receipt of optical interrogation |
| Interface | Electrical | RS232 levels |
| | Protocol | Any format – transparent link |
| | Baud rate | 115200 baud |

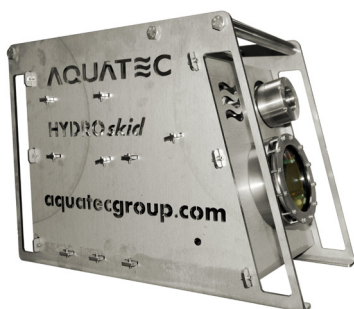
* Measured by transmitting packets of 2000 bytes, sending a packet every 250 ms. An average of 100 transmissions was used to calculate the speed.

Options

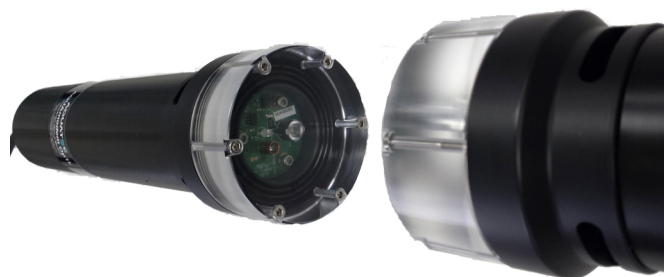
| | |
|---|--|
| AQUAmodem Op2 - complete package | Pair of optical modems, including external battery pack, cables – Y cable, ROV cable, test cable |
| AQUAmodem Op2 - ROV side package | Single optical modem, including ROV cable, test cable |
| AQUAmodem Op2 - Subsea package | Single optical modem, including external battery pack, Y cable |

Individual modems and accessories also available

Also available



HYDROskid 3000 featuring AQUAmodem Op2



AQUAmodem Op2L - light version

Contact us

t +44 (0)1256 416010 (UK) **t** +1-281-220-6035 (USA) **e** inquiry@aquatecgroup.com **w** www.aquatecgroup.com

Aquatec House, Stroudley Road, Basingstoke, Hampshire, RG24 8FW, UK